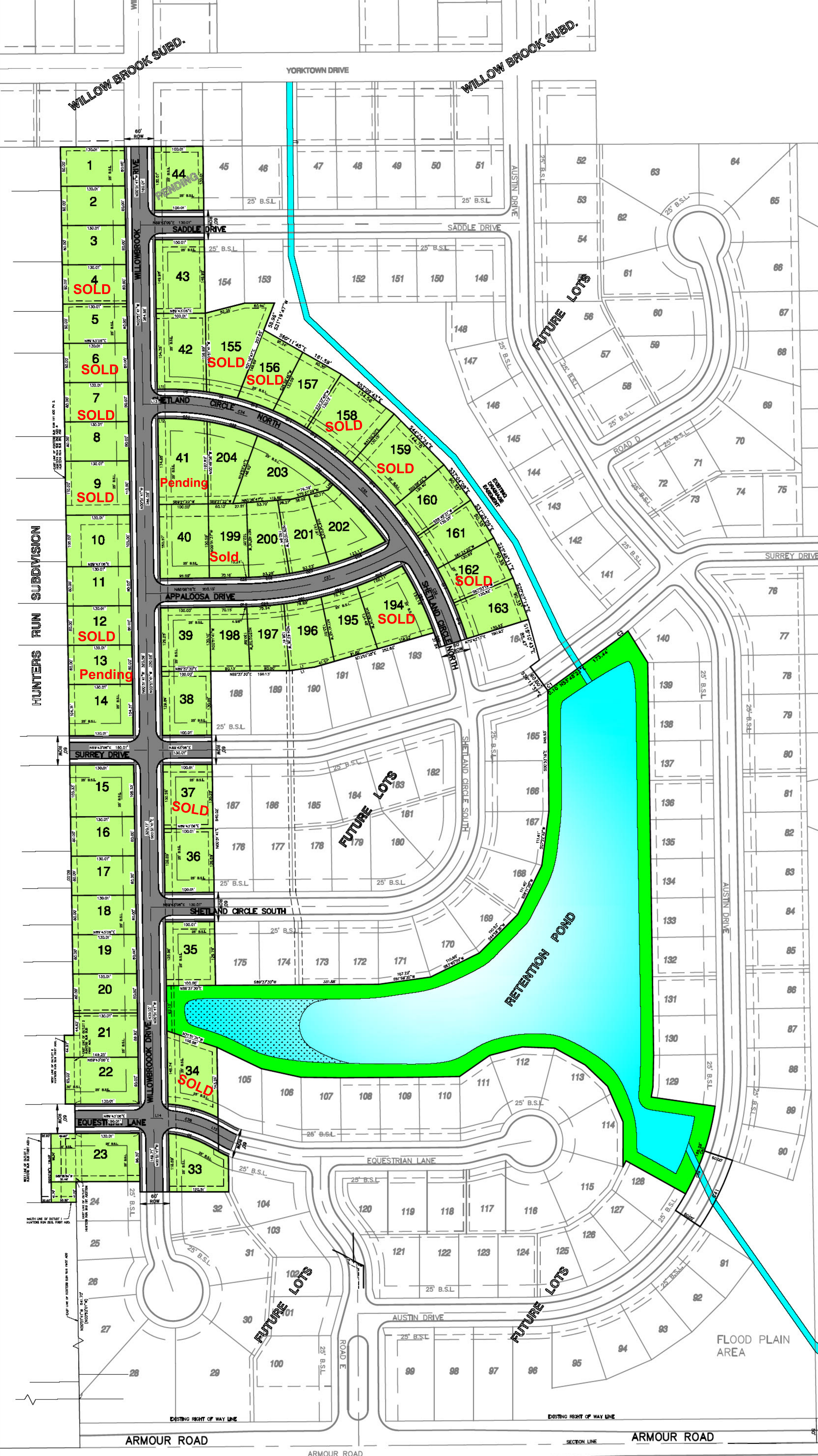
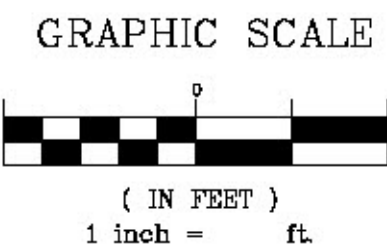


HUNTERS RUN EAST

PHASE 1

Updated July 2023

BRADLEY, ILLINOIS



LOT SCHEDULE		
Status	Lot Number	Sq. Footage
	1	10,400 sq.ft.
	2	10,400 sq.ft.
	3	10,400 sq.ft.
Sold	4	10,400 sq.ft.
	5	10,400 sq.ft.
Pending	6	10,400 sq.ft.
Sold	7	10,400 sq.ft.
	8	10,400 sq.ft.
Sold	9	14,300 sq.ft.
	10	13,650 sq.ft.
	11	10,400 sq.ft.
Sold	12	10,400 sq.ft.
Pending	13	10,400 sq.ft.
	14	13,560 sq.ft.
	15	13,693 sq.ft.
	16	10,401 sq.ft.
	17	10,401 sq.ft.
	18	10,401 sq.ft.
	19	10,401 sq.ft.
	20	10,401 sq.ft.
	21	12,547 sq.ft.
	22	14,161 sq.ft.
	23	17,698 sq.ft.
	33	12,158 sq.ft.
Sold	34	14,399 sq.ft.
	35	12,987 sq.ft.
	36	12,989 sq.ft.
Sold	37	13,028 sq.ft.
	38	12,997 sq.ft.
	39	12,968 sq.ft.
	40	15,077 sq.ft.
Pending	41	17,311 sq.ft.
	42	15,566 sq.ft.
	43	14,998 sq.ft.
Pending	44	13,001 sq.ft.
Sold	155	18,384 sq.ft.
Sold	156	11,726 sq.ft.
	157	10,951 sq.ft.
Sold	158	16,050 sq.ft.
Sold	159	17,263 sq.ft.
	160	10,887 sq.ft.
	161	10,898 sq.ft.
Sold	162	10,908 sq.ft.
	163	10,918 sq.ft.
Sold	194	15,795 sq.ft.
	195	11,233 sq.ft.
	196	11,570 sq.ft.
	197	10,358 sq.ft.
	198	10,125 sq.ft.
Sold	199	11,940 sq.ft.
	200	11,176 sq.ft.
	201	10,946 sq.ft.
	202	13,581 sq.ft.
	203	15,749 sq.ft.
	204	12,229 sq.ft.



240 N. Industrial Drive
Bradley, Illinois 60915
615-939-4921
FAX : 615-939-0810

M. GINGERICH, GEREUX

ASSOCIATES

ENGINEERING * PLANNING * SURVEYING